

Stix Essential® RES

AEROSOL SPRAY ADHESIVE

STAND TO DELIVER AEROSOL SPRAY • FOR RESILIENT VINYL FLOORING



Stix Essential RES Aerosol Spray Adhesive is a solvent-free, non-flammable Aerosol Spray Adhesive for installing resilient flooring, recommended for use with luxury vinyl tile and plank, sheet goods, and vinyl composition tile (VCT), in residential and commercial applications. The **Stix Essential RES** inverted delivery system allows the installer to apply adhesive from a normal standing position. It is particularly convenient since it can be used in occupied buildings and greatly reduces the handling and application requirements associated with conventional bucket adhesives. **Stix Essential RES** Spray Adhesive demonstrates highly aggressive grab and shear strength, and has outstanding water and plasticizer resistance. **Stix Essential RES** is CRI™ Green Label Plus approved by The Carpet and Rug Institute for Indoor Air Quality, FloorScore® Certified by SCS Global Services for Indoor Air Quality, approved by Resilient Floor Covering Institute (RFCI) and Cradle to Cradle Certified™ at the SILVER Level for Material Health, Material Reutilization, Renewable Energy, Water Stewardship and Social Fairness.



SUBSTRATE CONDITIONS

- Use on concrete concrete substrates with up to 93% RH (per current ASTM F2170), and pH of 8.0–11.0.

USE WITH

- Luxury vinyl tile (LVT)
- Luxury vinyl plank (LVP)
- Resilient sheet vinyl
- Vinyl composition tile (VCT)
- Residential & commercial

CERTIFICATIONS

- Cradle to Cradle Certified™ at the SILVER Level
- FloorScore® Certified
- CRI™ Green Label Plus
- LEED Credits: MR Credit 2.1 & 5, EQ 4, and EQ 4.3 ('zero' calculated VOC)

LIMITATIONS

- DO NOT ALLOW PRODUCT TO FREEZE
- Do not expose to temperatures over 115°F
- Shelf life two years from date of manufacture, in unopened container. Store indoors at a temperature between 65-95°F.

BEFORE YOU BEGIN:

Important: Proper substrate preparations are essential. Moisture testing must be performed and documented before installation begins. Read XL Brands Technical Bulletin titled Substrate Preparation for complete instructions before beginning installation. This document may be found at [http://www.xlbrands.com/Resources/Technical Bulletins/Substrate Preparations](http://www.xlbrands.com/Resources/Technical%20Bulletins/Substrate%20Preparations). Read all instructions before use. If you have questions, contact XL Brands Technical Department at 706-508-5907 Mon-Fri, 8:00am - 5:00pm EST before you begin.

USAGE:

A clean substrate is ESSENTIAL! Thoroughly sweep and vacuum the substrate first. Damp mop to remove any remaining dust or debris. Extra attention to substrate preparation is essential for a successful installation.

APPLICATION:

Shake can well before each use. Point can downwards, press the side of the nozzle tip as you slowly walk back and forth. Do not use a sweeping motion as this may create uneven coverage. Clean up drips. When using for LVT or LVP, be sure to achieve full coverage. When using on a non-porous substrate, a lighter application may be necessary. A heavier application at the seams and sheet edges is recommended.

NOTE: It is up to the end user to determine the coverage that is appropriate for flooring and jobsite conditions. Bond testing prior to the installation will help identify the appropriate application rate, open and working time, and any potential bonding problems to the substrate or flooring. To determine the accurate coverage rate, measure and chalk line the substrate into grids (using the appropriate square feet of area for the adhesive application) and spray the entire can of adhesive onto each measured grid area.

COVERAGE:

Rate of application depends on flooring product being installed and porosity of the substrate:
 160 - 185 square feet per can (approximate): VCT
 140 - 150 square feet per can (approximate): Luxury Vinyl Tiles, Planks and Sheet

OPEN TIME: Allow the adhesive to dry completely with no transfer to fingers when lightly touched. Open time will vary depending on the adhesive coverage, substrate porosity and the ambient conditions. Working time for the adhesive should not exceed 4 hours.

FLOORING INSTALLATION:

Roll the floor immediately after the installation is complete with the appropriate roller specified for the flooring type. Sheet flooring seams may be heat welded immediately after installation. Normal traffic and rolling loads may be allowed as soon as the installation, finishing and clean-up are complete.

SAFETY AND CLEAN UP:

Wet adhesive overspray or drips should be cleaned with soap and water on a clean cloth. Dried adhesive may require the use of a solvent adhesive cleaner. Between uses, clean the spray tip immediately with a clean wet cloth to prevent accumulation of dried adhesive.

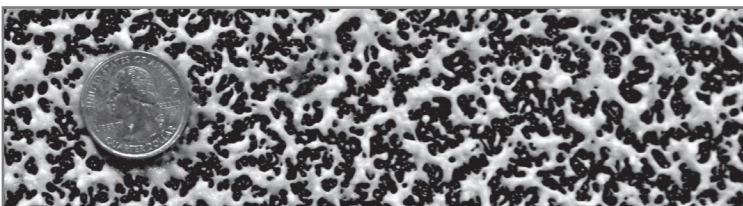
Empty aluminum spray cans should be relieved of excess pressure and recycled or disposed of in accordance with local requirements. Do not expose to temperatures exceeding 115° F. Prolonged exposure to heat or direct sun may cause container to burst.

CARB VOC Category: Aerosol Adhesive

CARB VOC Limit is 75%, this product contains zero (calculated) VOCs

DISCLAIMER:

Users should determine the suitability of this information or product for their own particular purpose or application. Manufacturer is not responsible for the misuse of this product. This Technical Data sheet and the information conveyed herein supersede all previous versions. XL Brands, MicroSept and Stix are registered trademarks of XL Brands, LLC. Cradle to Cradle Certified is a certification mark licensed by the Cradle to Cradle Products Innovation Institute. FloorScore is a registered trademark of SCS Global Services. CRI is a registered trademark of The Carpet and Rug Institute.



SPRAY PATTERN:

For 150 square foot coverage your pattern should look like this when compared to a US Quarter. Coverage should be heavier at the seams. To view an instruction video on the use of Stix Essential visit www.xlbrands.com or <http://www.xlbrands.com/technical-data/instructional-videos/>.

If you have questions or concerns, contact XL Brands Technical Department at 706-508-5907 Mon-Fri, 8:00am - 5:00pm EST.