

Stix Essential® RES

AEROSOL FLOORING ADHESIVE

STAND TO DELIVER AEROSOL SPRAY • FOR MOST RESILIENT FLOORING & MODULAR CARPET TILES



Stix Essential RES Aerosol Flooring Adhesive is a solvent-free, non-flammable spray adhesive for installing most modular carpet tiles and resilient flooring, recommended for use with luxury vinyl tile and plank, sheet goods, vinyl composition tile (VCT) and modular carpet tiles in residential and commercial applications. The **Stix Essential RES** inverted delivery system allows the installer to apply adhesive from a normal standing position. It is particularly convenient since it can be used in occupied buildings and greatly reduces the handling and application requirements associated with conventional bucket adhesives. **Stix Essential RES** adhesive demonstrates highly aggressive grab and shear bond strength, and has outstanding water and plasticizer resistance. **Stix Essential RES** is CRI™ Green Label Plus approved by The Carpet and Rug Institute for Indoor Air Quality, FloorScore® Certified by SCS Global Services and approved by The Resilient Floor Covering Institute (RFCI) and Certified SILVER for Material Health by the Cradle to Cradle Products Innovation Institute.



SUBSTRATE CONDITIONS

- Modular carpet tiles over concrete substrates with up to 90% RH, and pH of 8.0–10.0.
- Resilient flooring over concrete substrates with up to 93% RH, and pH of 8.0–11.0.

USE WITH

- Most modular carpet tiles, residential & commercial
- Luxury vinyl tile and plank
- Vinyl sheet goods
- Vinyl composition tile (VCT)

CERTIFICATIONS

- Certified for Material Health at the SILVER Level
- FloorScore® Certified
- CRI™ Green Label Plus
- LEED V4 Credits: IEQ Credit 2.1, 2.2, MR Credit 4.1, 4.2.

LIMITATIONS

- DO NOT ALLOW PRODUCT TO FREEZE
- Do not expose to temperatures over 115°F
- Shelf life two years from date of manufacture, in unopened container. Store indoors at a temperature between 65-95°F.

BEFORE YOU BEGIN:

Important: Proper substrate preparations are essential. Moisture testing must be performed and documented before installation begins. Read XL Brands Technical Bulletin titled Substrate Preparation for complete instructions before beginning installation. This document may be found at [http://www.xlbrands.com/Resources/Technical Bulletins/Substrate Preparations](http://www.xlbrands.com/Resources/Technical%20Bulletins/Substrate%20Preparations). Read all instructions before use. If you have questions, contact XL Brands Technical Department at 706-508-5907 Mon-Fri, 8:00am - 5:00pm EST before you begin.

USAGE:

A clean substrate is ESSENTIAL! Thoroughly sweep and vacuum the substrate first. Damp mop to remove any remaining dust or debris. Extra attention to substrate preparation is essential for a successful installation.

APPLICATION:

Shake can well before each use. Point can downwards, press the side of the nozzle tip as you slowly walk back and forth. Do not use a sweeping motion as this may create uneven coverage. Clean up drips. Be sure to achieve full coverage. When using on a non-porous substrate, a lighter application may be necessary.

NOTE: It is up to the end user to determine the coverage that is appropriate for flooring and jobsite conditions. Bond testing prior to the installation will help identify the appropriate application rate, open and working time, and any potential bonding problems to the substrate or flooring. To determine the accurate coverage rate, measure and chalk line the substrate into grids (using the appropriate square feet of area for the adhesive application) and spray the entire can of adhesive onto each measured grid area.

COVERAGE:

Rate of application depends on flooring product being installed and porosity of the substrate.
 160 - 185 square feet per can (approximate) : VCT, Carpet Tile
 140 - 150 square feet per can (approximate) : Luxury Vinyl Tiles, Planks & Sheet

OPEN TIME: Allow the adhesive to dry completely with no transfer to fingers when lightly touched. Open time will vary depending on the adhesive coverage, substrate porosity and the

ambient conditions. Working time for the adhesive should not exceed 4 hours.

FLOORING INSTALLATION:

Roll the floor immediately after the installation is complete with the appropriate roller specified for the flooring type. Normal traffic and rolling loads may be allowed as soon as the installation, finishing and clean-up are complete.

CLEAN UP:

Wet adhesive overspray or drips should be cleaned with soap and water on a clean cloth. Dried adhesive may require the use of a solvent adhesive cleaner. Between uses, clean the spray tip immediately with a clean wet cloth to prevent accumulation of dried adhesive.

SUBSTRATE CONDITIONS:

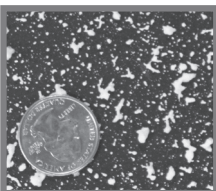
For resilient flooring:
 use on concrete substrates with up to 93% RH (per current ASTM F2170), and pH of 8.0–11.0.
For modular carpet tiles:
 use on concrete substrates with up to 90% RH (per current ASTM F2170), and pH of 8.0–10.0.

Empty aluminum spray cans should be relieved of excess pressure and recycled or disposed of in accordance with local requirements. Do not expose to temperatures exceeding 122° F. Prolonged exposure to heat or direct sun may cause container to burst.

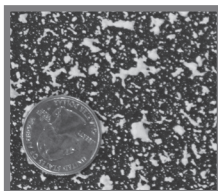
CARB VOC Category: Aerosol Mist Adhesive
 CARB VOC Limit is 30% by weight, this product contains zero (calculated) VOCs

DISCLAIMER:

Users should determine the suitability of this information or product for their own particular purpose or application. Manufacturer is not responsible for the misuse of this product. This Technical Data sheet and the information conveyed herein supersede all previous versions. XL Brands, MicroSept and Stix and Stix Essential are registered trademarks of Bostik, Inc.. FloorScore is a registered trademark of The Resilient Floor Covering Institute. CRI is a registered trademark of The Carpet and Rug Institute.



Proper Spray Pattern for coverage of approx. 160-185 sq. ft.



Proper Spray Pattern for coverage of approx. 140-150 sq. ft.

SPRAY PATTERN:

Your pattern should look like the images to the left when compared to a US Quarter. To view an instruction video on the use of Stix Essential visit www.xlbrands.com or <http://www.xlbrands.com/technical-data/instructional-videos/>. If you have questions or concerns, contact XL Brands Technical Department at 706-508-5907 Mon-Fri, 8:00am - 5:00pm est.